

# *The Illinois District? A Mission Field?*

## **THERE ARE NO...**

- village kraals or grass huts
- piranhas or witchdoctors
- jungles or elephants

## **BUT THERE ARE PLENTY OF...**

- unchurched people in urban and rural settings
- towns over 4,000 without a holiness church
- ethnic & racial groups: African American, Asian, Caucasian, Hispanic/Latin, Native American, etc.
- hard working, plain spoken, highly educated, culturally diverse people who know more about football than Jesus Christ

## **THE CHURCH OF THE NAZARENE ON THE ILLINOIS MISSION FIELD...**

- has been active since our oldest church was organized in 1910
- currently has 86 mission outposts and missionary pastors
- contributed over \$10 million in 2007 toward having a mission presence in Illinois

*So what are we going to do about the millions of souls on the Illinois mission field who do not normally attend church?*

## **WATCH!**

Jesus had compassion for people when He saw them. We must have our Father's eyes when it comes to seeing our broken world. Our spiritual burden for people who do not know God will be increased if we can see them as Jesus does.

## **PRAY!**

The Lord Jesus told His disciples, "Ask the Lord of the harvest to send out workers into His harvest field." Prayer is work; meeting God in prayer takes time and energy. Yet, nothing is done without prayer.

## **SEND!**

The only reason Christianity has lasted is that people have been sent out to repeat the story of salvation. When laity and clergy no longer share the Good News, the message dies. Our passion is to reach people with the Gospel and prepare and send out messengers.

## **OUR TASK:**

To see ourselves as being sent on a mission – witnessing to the power and grace of God with the goal of persuading others to accept Jesus Christ as Lord.

## **GOALS & OBJECTIVES**

### **Goals for each local church:**

1. The churches of the Illinois District shall have a written strategic plan for reaching the lost and church growth.
2. The pastors of the Illinois District shall be involved in a coaching movement and maintain coaching relationships.
3. The churches of the Illinois District shall strive for "Church Health" using the Church Health Survey and the Natural Church Development process.
4. The churches of the Illinois District shall have a clearly stated target area and plan for involvement in a NewStart project.

**Timeline:**      3 years 50% of the churches involved  
                         5 years 75% of the churches involved  
                         7 years 100% of the churches involved

### **Goals for the District:**

#### **2 Year Goals - 2008**

- Morning worship increased to 7,500
- 6 NewStarts
- Sunday School attendance increased to 5,600

#### **4 Year Goals - 2010**

- Morning worship increased to 8,500
- 15 NewStarts
- Sunday School attendance increased to 6,200

#### **6 Year Goals - 2012**

- Morning worship increased to 9,500
- 25 NewStarts
- Sunday School attendance increased to 6,800

#### **8 Year Goals - 2014**

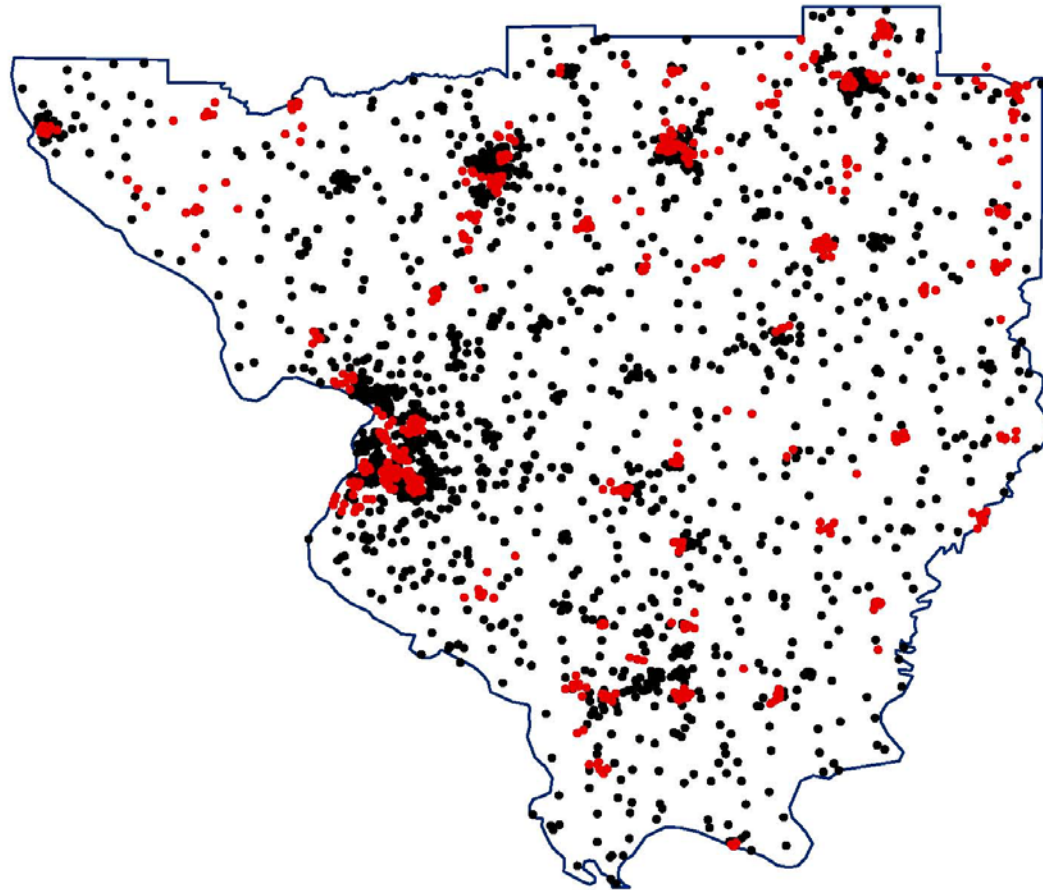
- Morning worship increased to 10,500
- 35 NewStarts
- Sunday School attendance increased to 7,400

#### **10 Year Goals - 2016**

- Morning worship increased to 12,000
- 40 NewStarts including 5 compassionate ministry centers
- Sunday School attendance increased to 8,000



# The Illinois District Mission Field



**Each red dot represents 1,000 people near a Nazarene church.**  
**Each black dot represents 1,000 people not near a Nazarene church.**

Prepared by the Research Center, Church of the Nazarene, 5/31/06

## Missional Objectives for 2010-2011:

What does it mean to become missional on the mission field of Illinois?

- It means we believe that the Illinois District really *is* a mission field, and that we are sent to reach lost, unchurched people for Jesus Christ.
- It means that each pastor and church embrace the significance of "team". Jesus and His disciples were a good example. He had to teach them how to avoid the twin perils of competition and comparison, and practice servanthood, accountability and cooperation.
- It means that a spirit of prayer and revival must prevail in every church.
- It means we will give faithful attention to the development of Nazarene Acres. We enjoy its many benefits, but its future value lies in service to our children and the generations yet to come.
- It means we will create opportunity for on-going dialogue and the free exchange of ideas regarding our budget allocation.
- It means we will connect ourselves locally with the demands and challenges of the church planting/ReFocus movement.
- It means we establish annual faith initiatives:
  - ✓ New Starts by next assembly.
  - ✓ 5% growth in morning worship attendance.
  - ✓ 3% growth in Sunday School attendance.

## Our Covenant:

We covenant to be passionate about: 1) our commitment to reaching people in Illinois for Jesus Christ; 2) developing strong, healthy churches; 3) starting new church plants.